



**Manuel Costa**

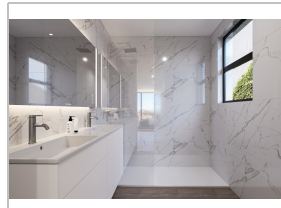
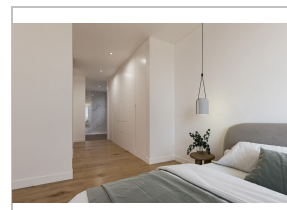
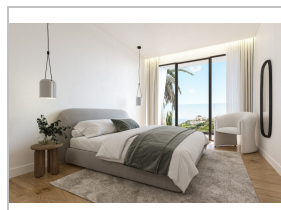
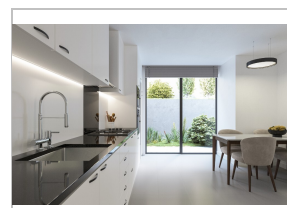
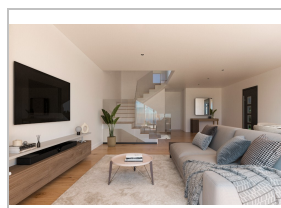
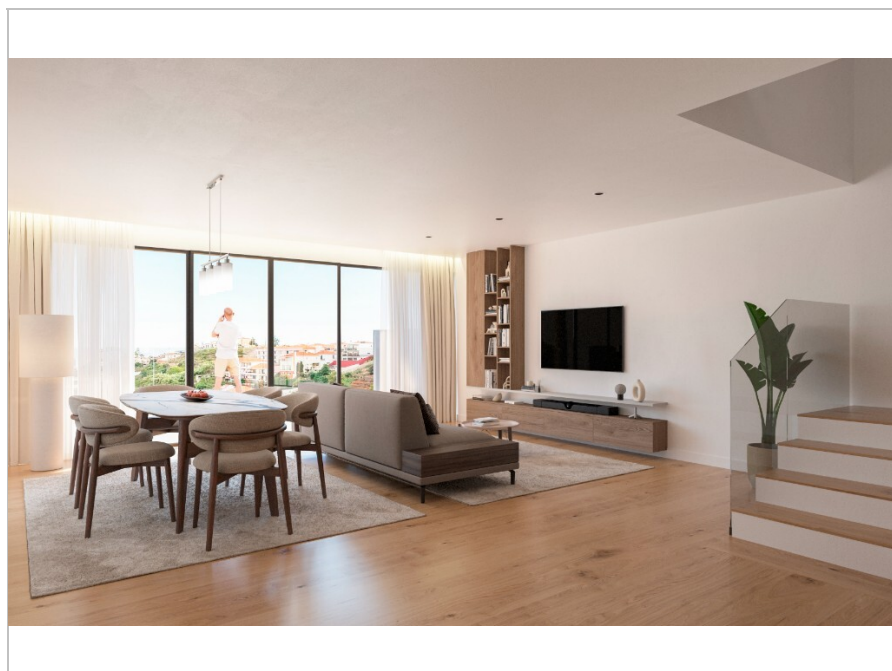
**+351928023261** (Call to national mobile network)

**manuel.costa@ser.com.pt**



## For sale House T3

Ref. 00337-MC-B



**Funchal**

**Santo António**

**680.000 €**

**Estado:** In Planning

**Área Útil:** 202 m²

**Ano Construção:** -

**Quartos:** 3

**Área Bruta:** 255 m²

**Certificado Energético:** A

**WC:** 4

**Área Terreno:** m²

Each house is a Being and this is the Treble Clef 36.

A Treble Clef, also known as Gino clave or female clef, indicates the position of the G note on a musical staff. This Being, like a Treble Clef, will always indicate the position of the sun in the agenda of life. We then present a musical score that includes four villas, all with contemporary architecture and facing south, with sea views.

With approximately 240m² of gross area, each house has a glazed façade across the entire width of the ground floor and 1st floor. On the ground floor, the musical notes build a harmonious ballad between the living room, the kitchen, the laundry room and a WC. On the 1st floor, the tariff is distributed between two bedrooms, a bathroom and a suite with a generous closet and a private bathroom. Two of the bedrooms are

**Manuel Costa**

**Rua Doutor Carlos Varela, 9000-759 FUNCHAL**

**AMI 17708**

(Call to national telephone network) **+351928023261**

(Call to national mobile network)

**manuel.costa@ser.com.pt**